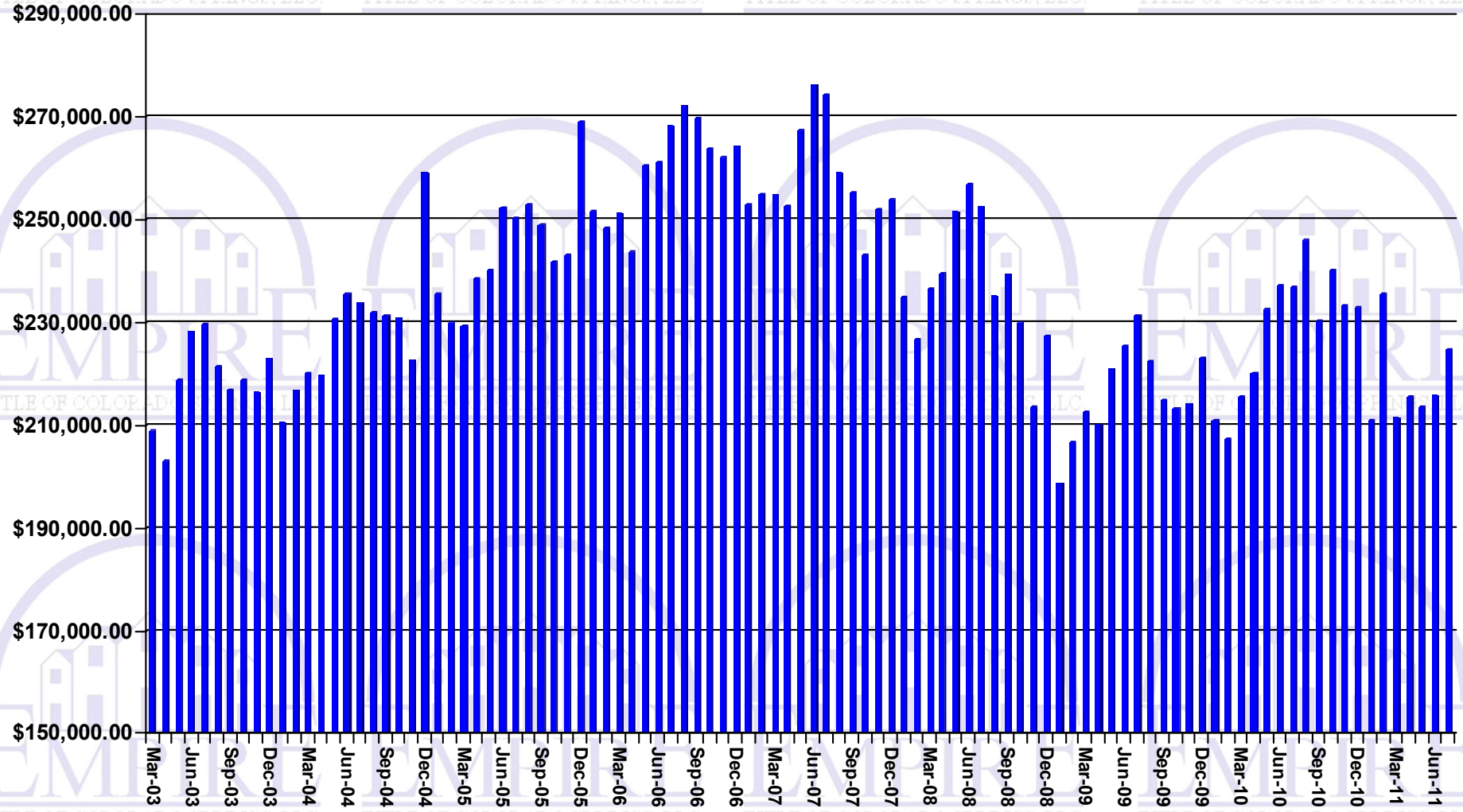
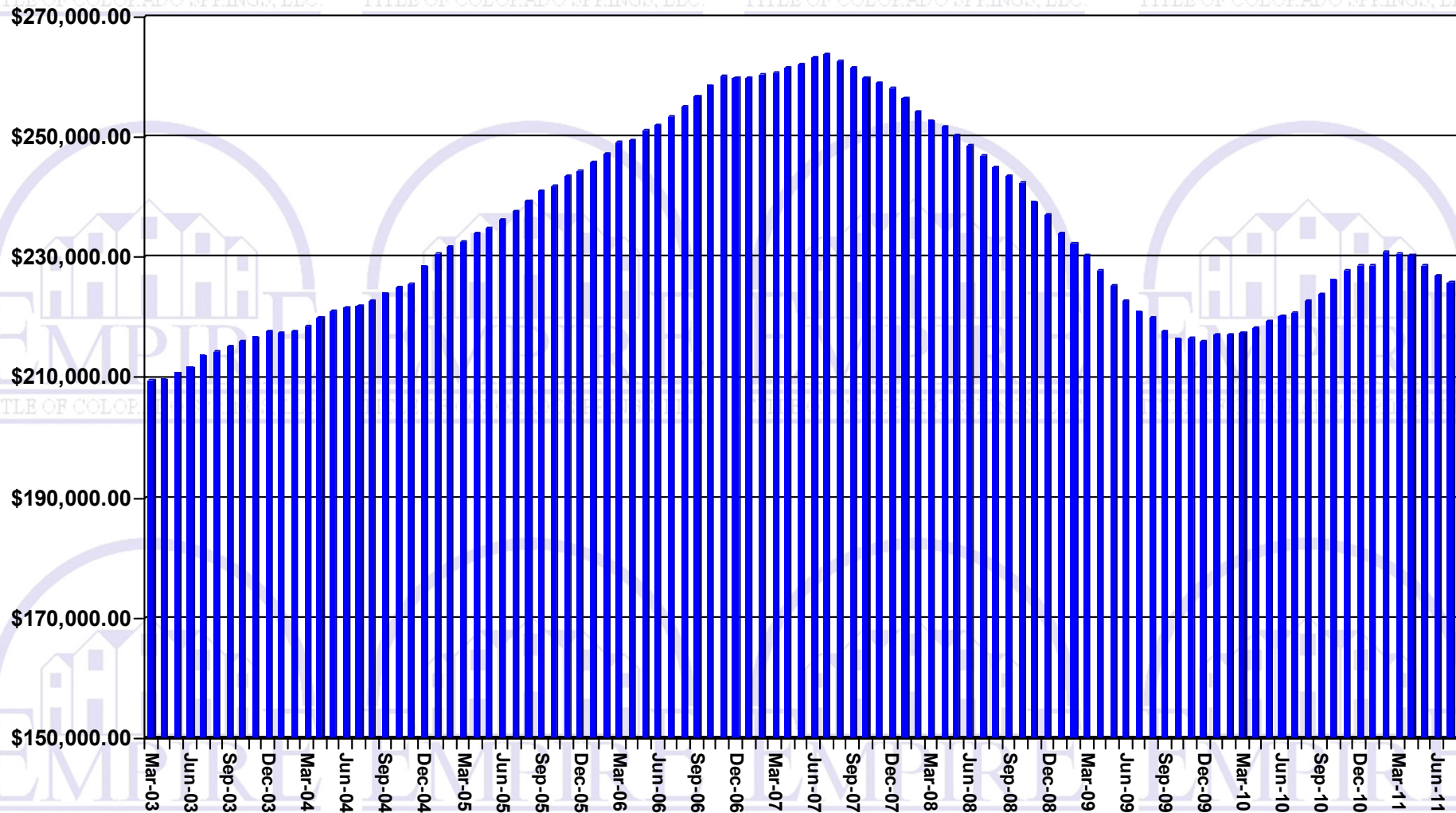


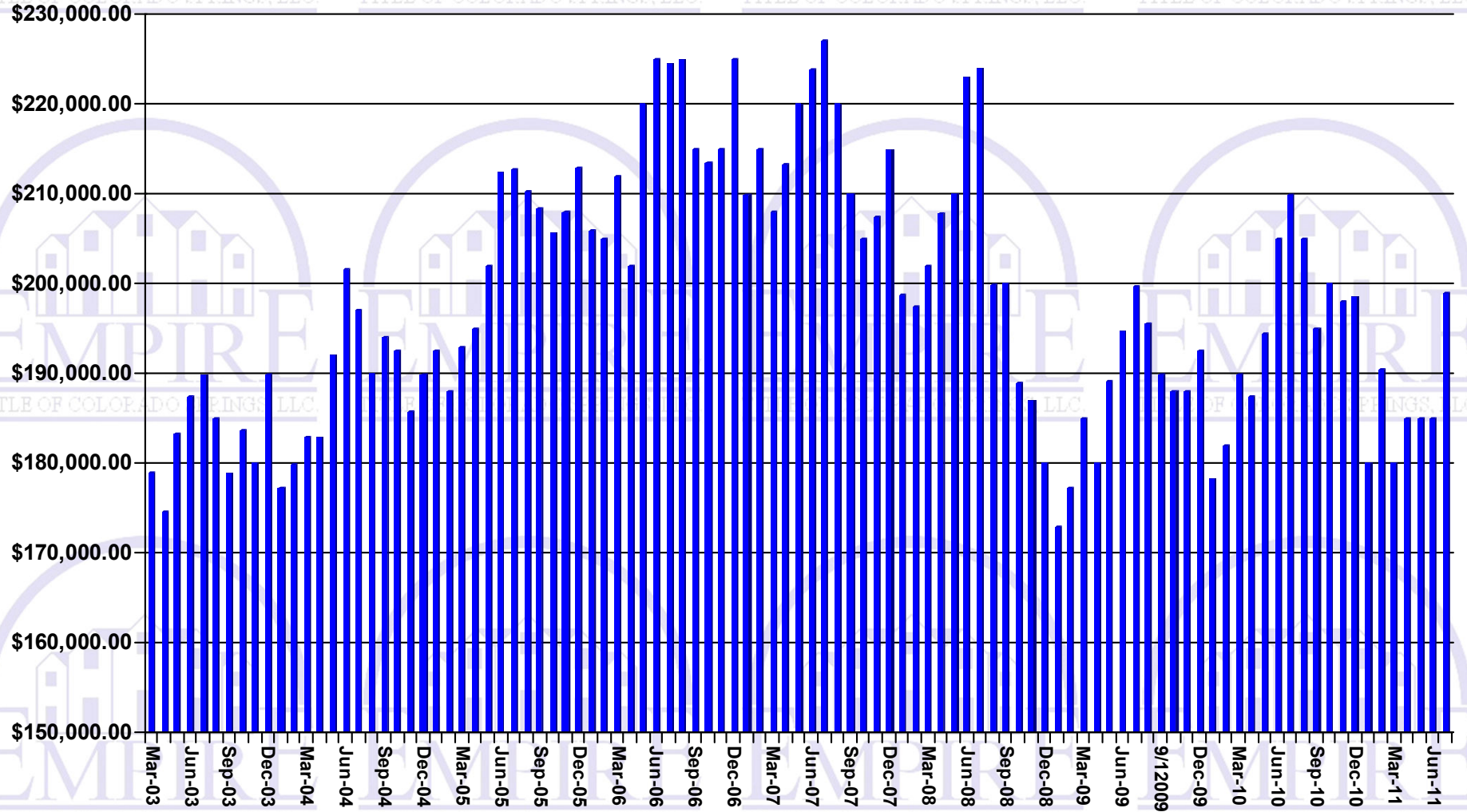
Average Sales Price



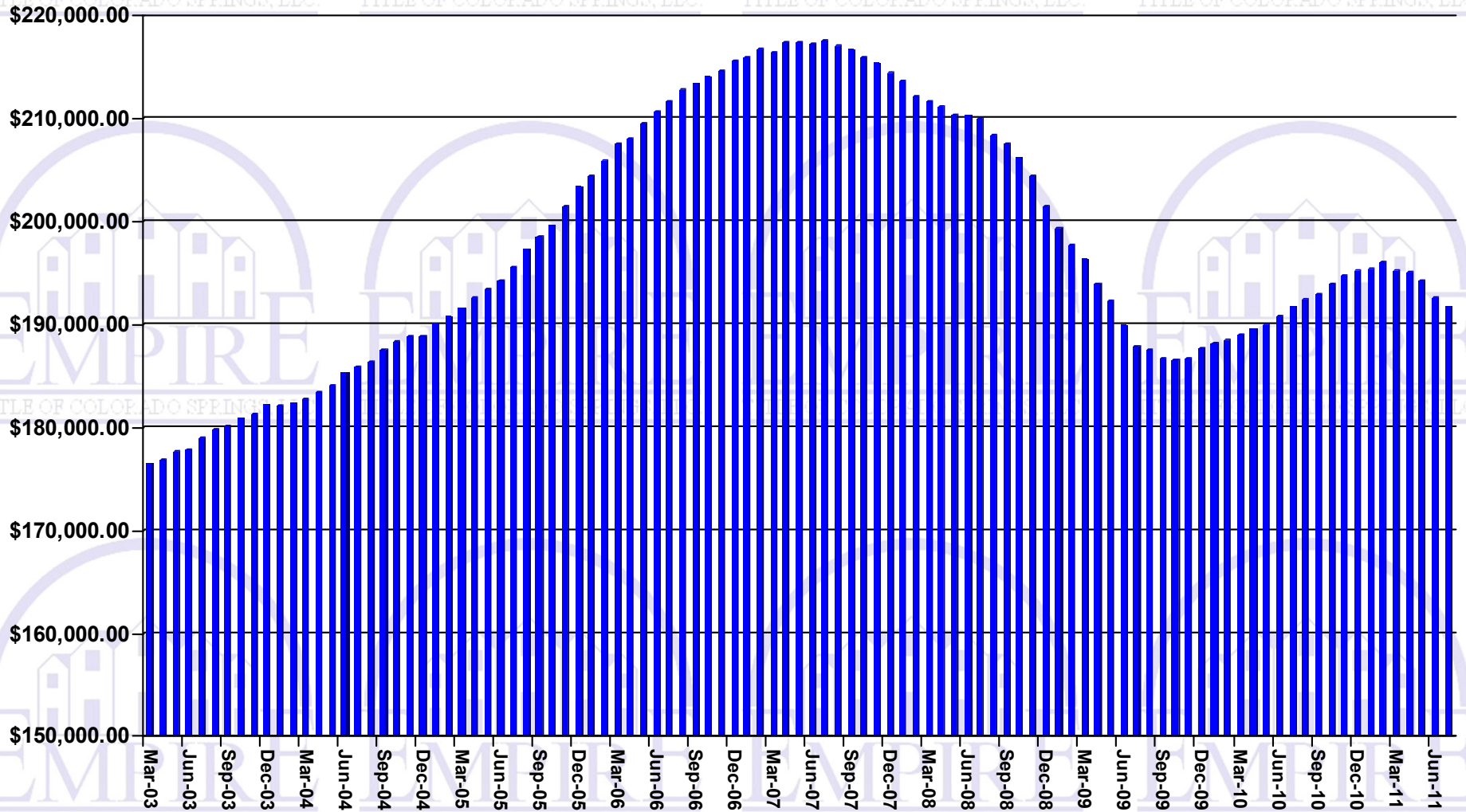
Sales Price Previous 12 Month Average



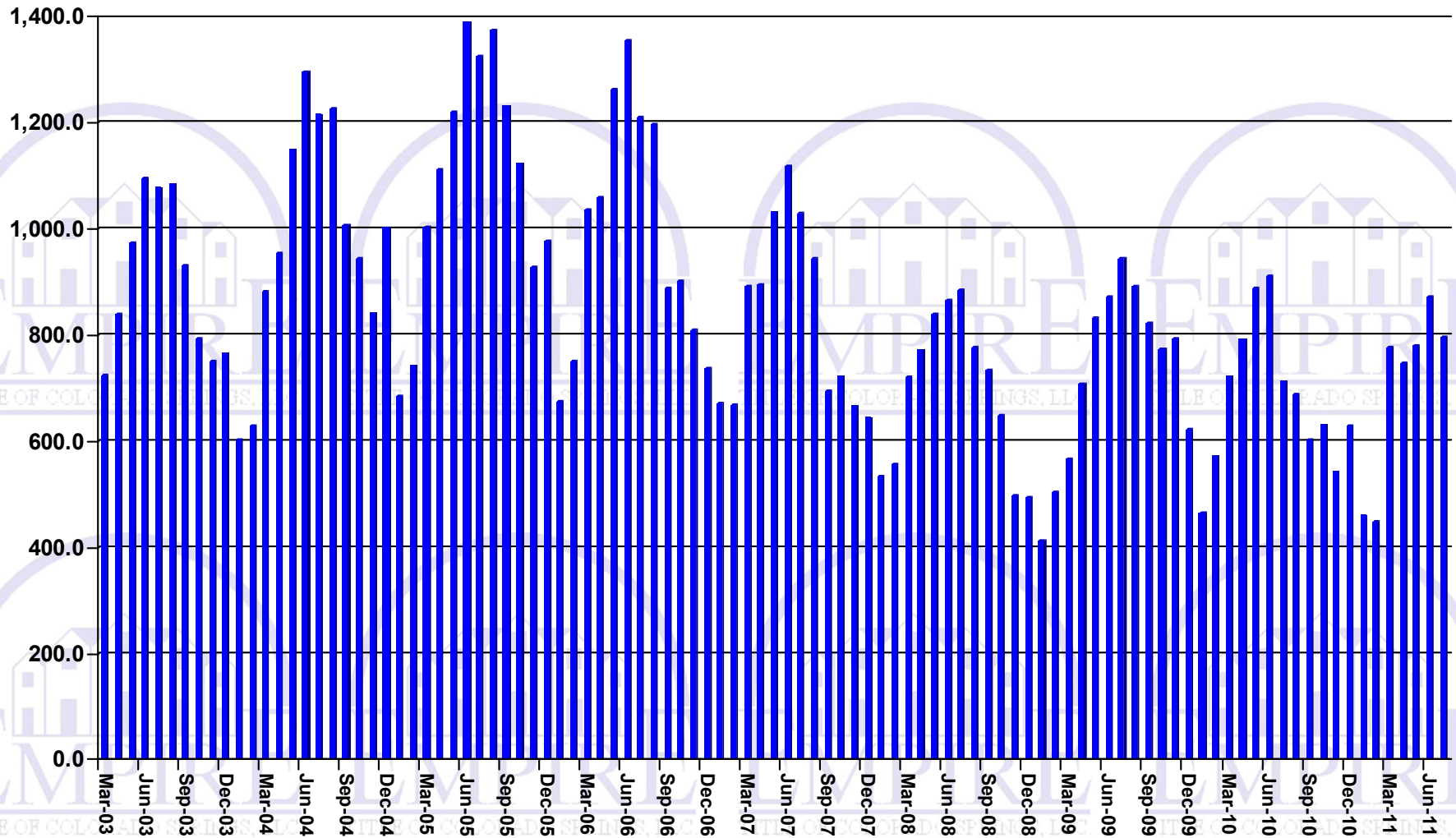
Median Sales Price



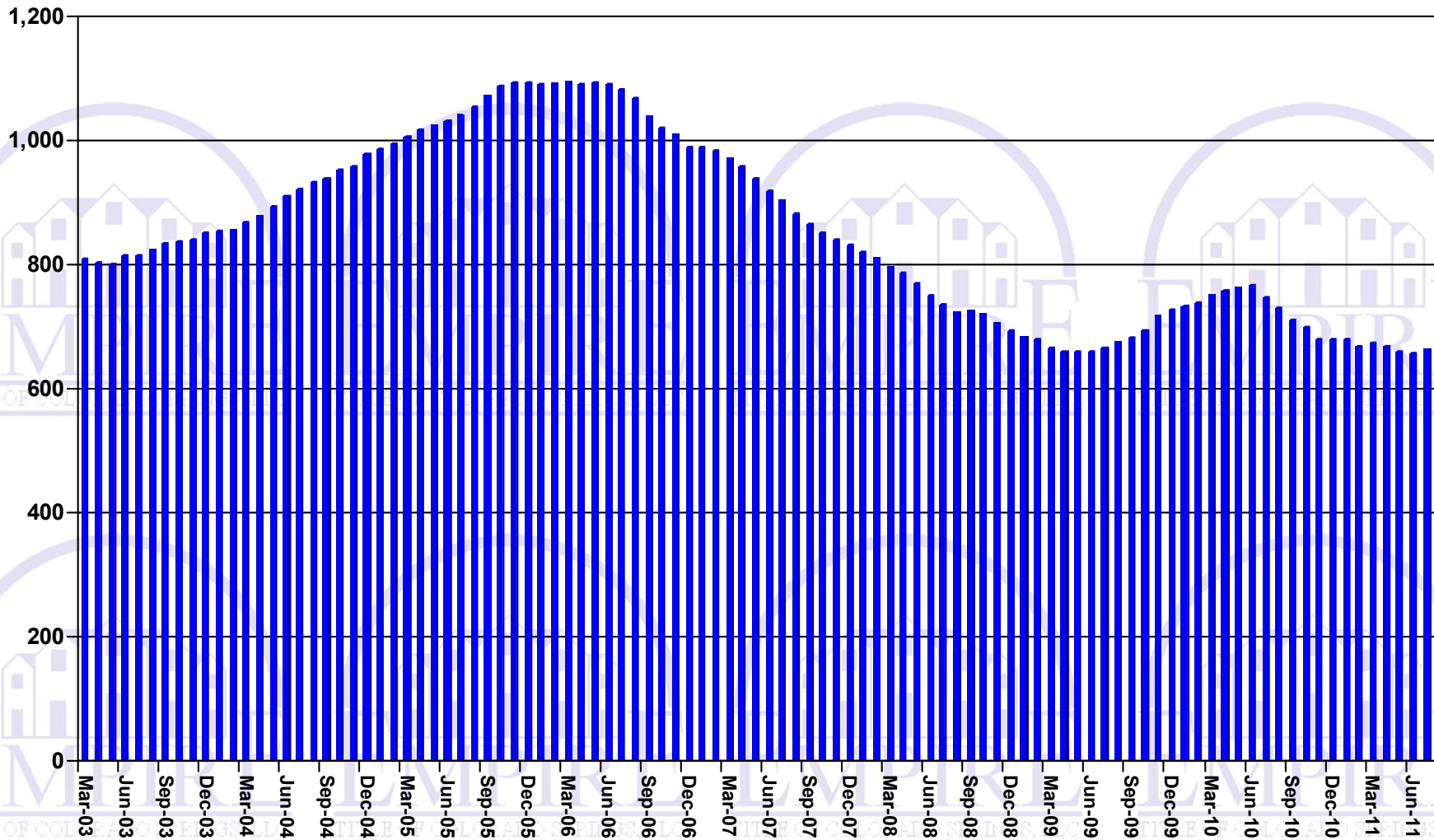
Sales Price Previous 12 Month Median



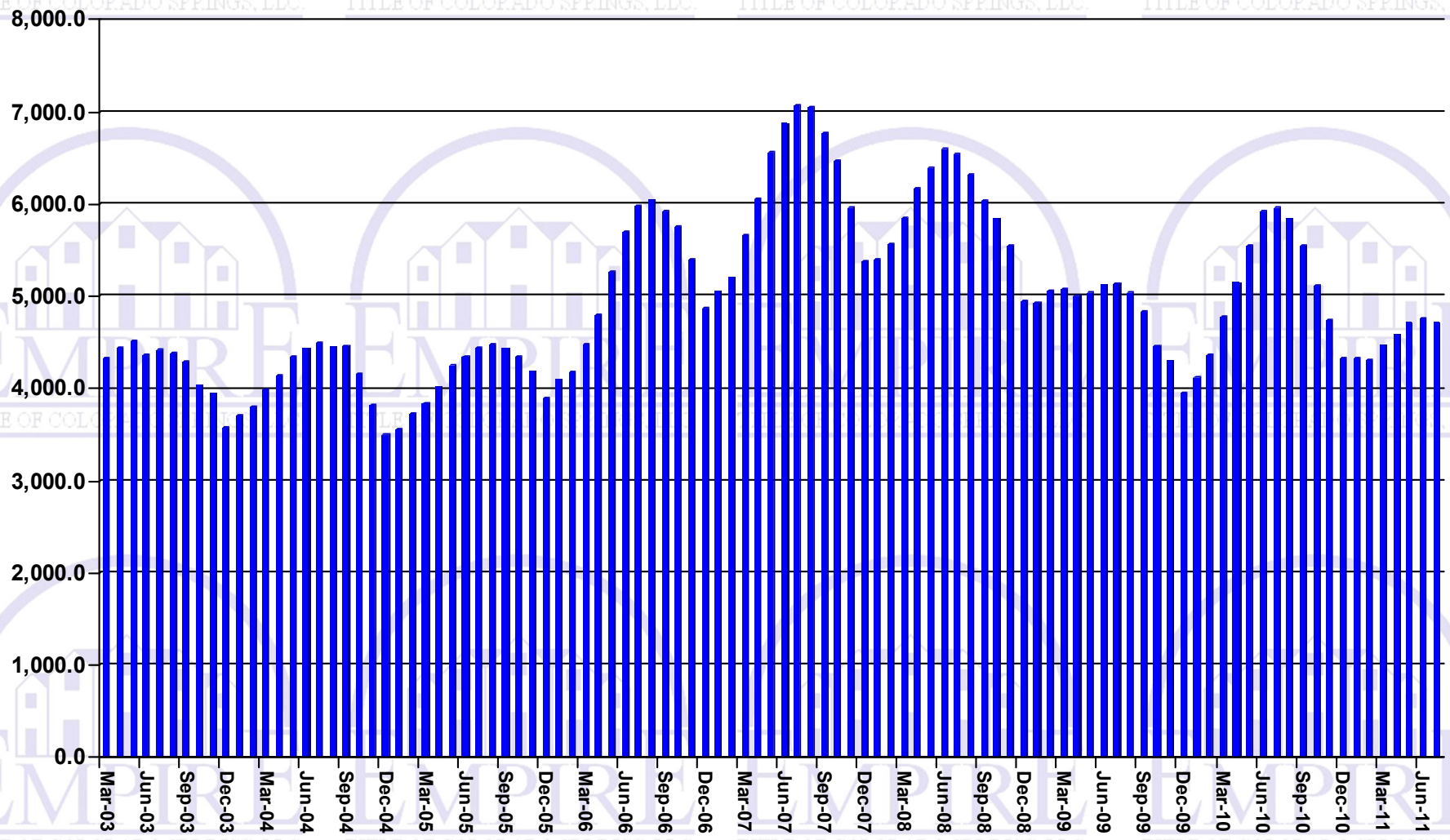
Number of Sales Per Month



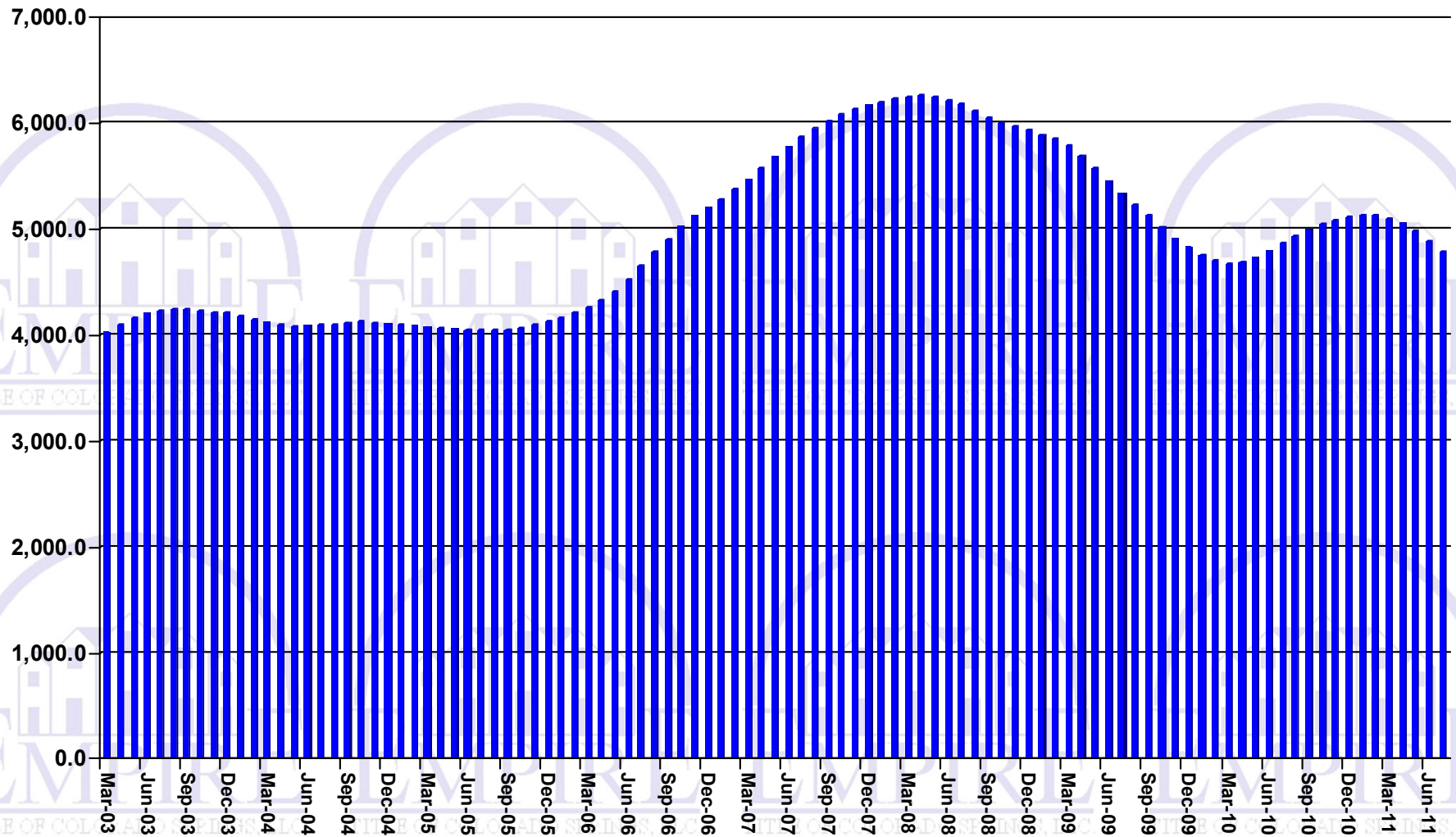
Number of Sales Previous 12 Month Average



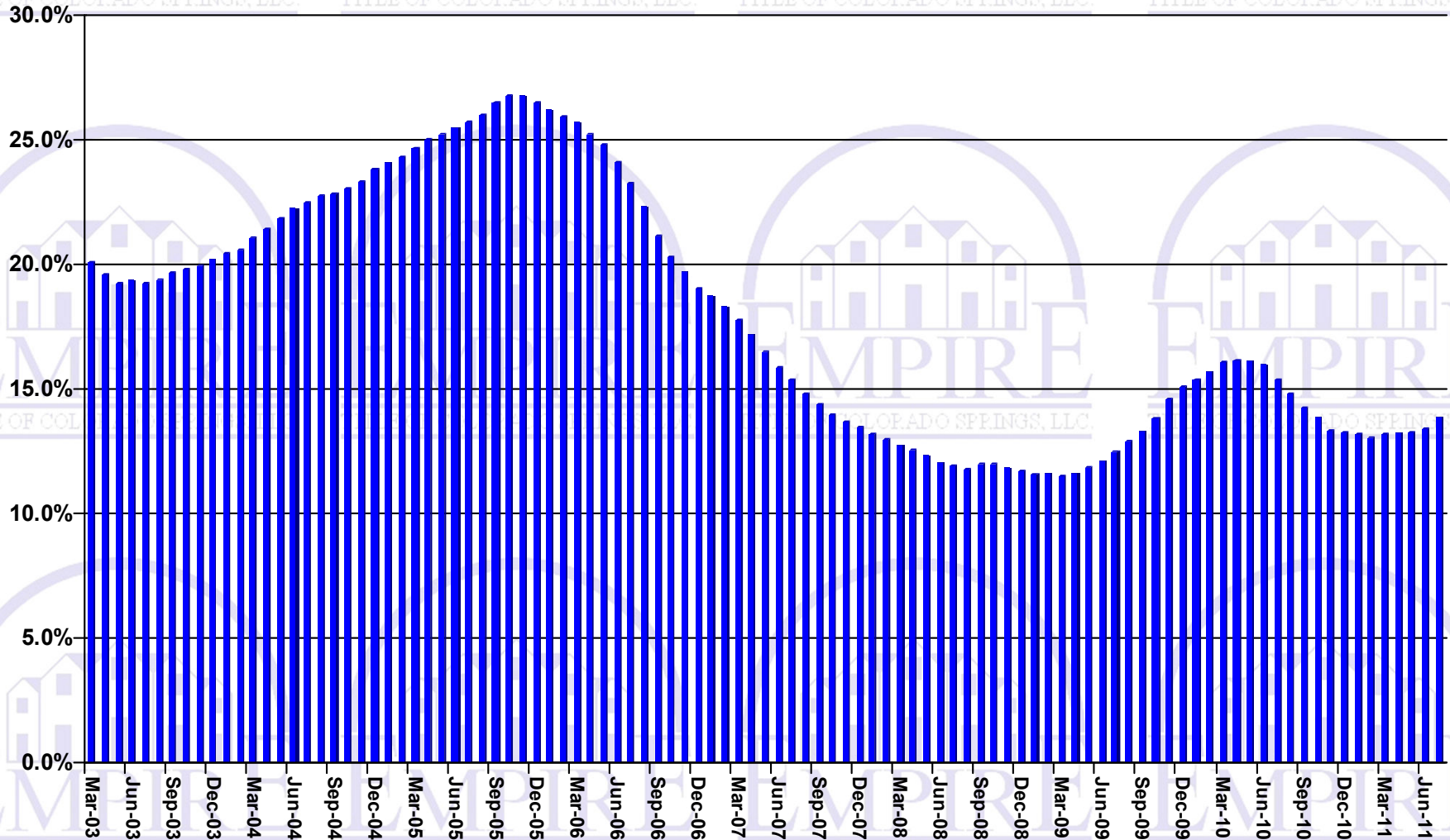
Active Listings



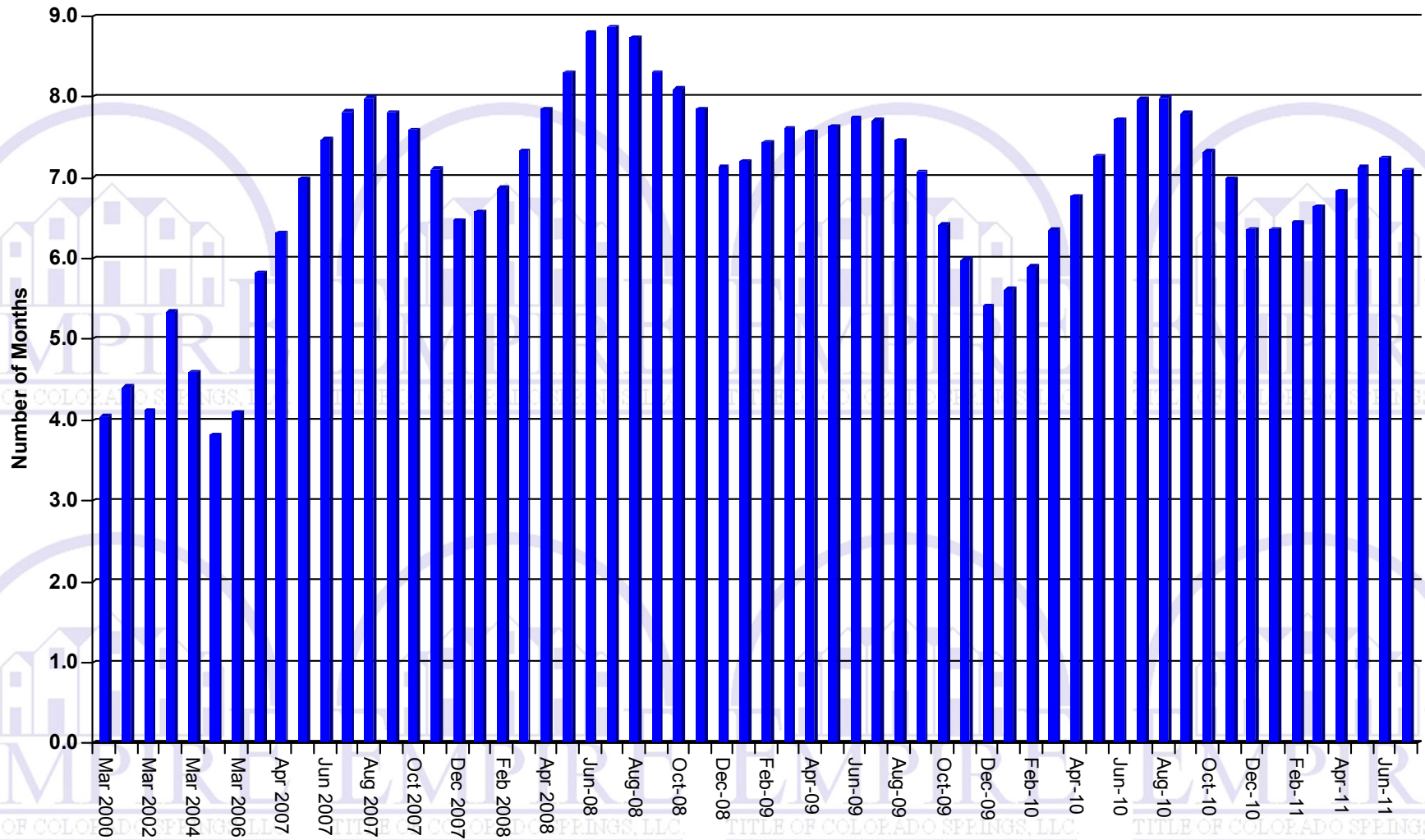
Active Listings Previous 12 Months Average



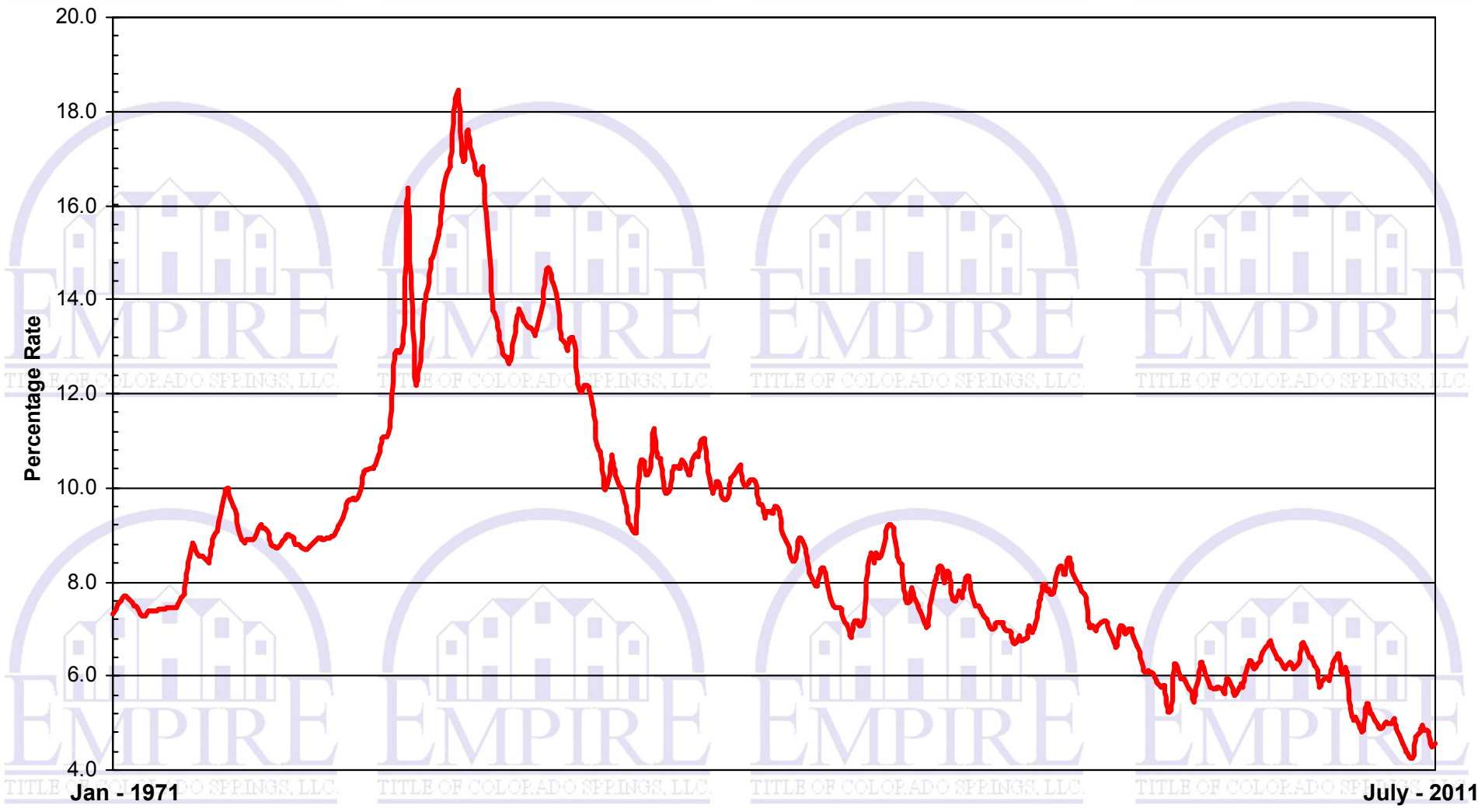
Sales as a % of Active Listing Previous 12 Month Average



Inventory in Number of Months

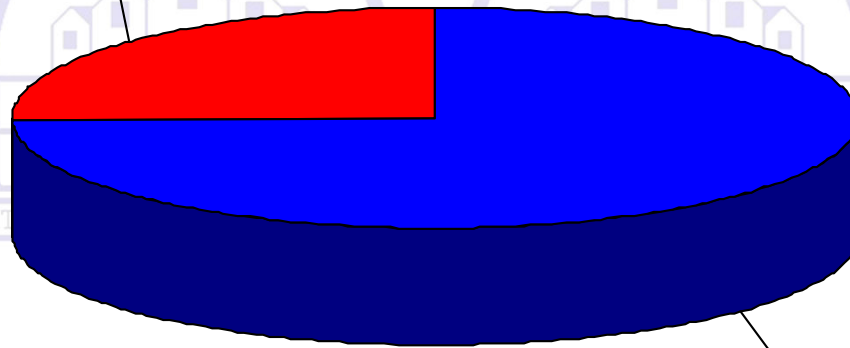


Freddie Mac 30 Fixed Rate Mortgage



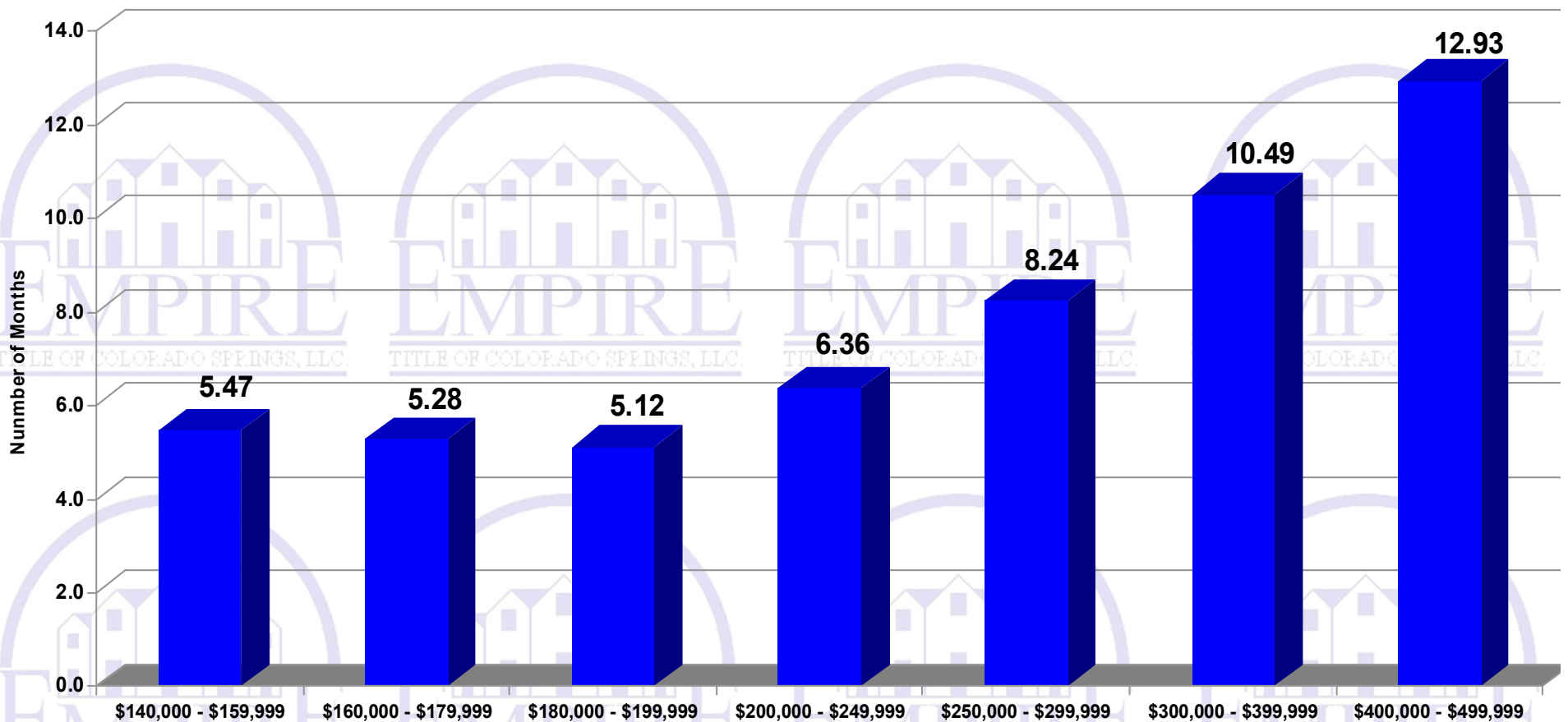
Percent of Sales by Price Year to Date 2011

\$250,000 and Greater
25.3%



\$249,000 or Less
74.7%

Months of Inventory July 2011



2011 YTD vs. 2010 YTD

- Average Price  2.2%
- Median Price  3.2%
- Residential Units Sold  3.6%
- Inventory Levels  0.3%
- Number of Listings  10.9%
- Foreclosures  26.9%
- Interest Rates are at historic lows